

GENIUS⁺

Hyaluronic Acid Dermal Filler



A Stroke of Genius...

SMOOTH

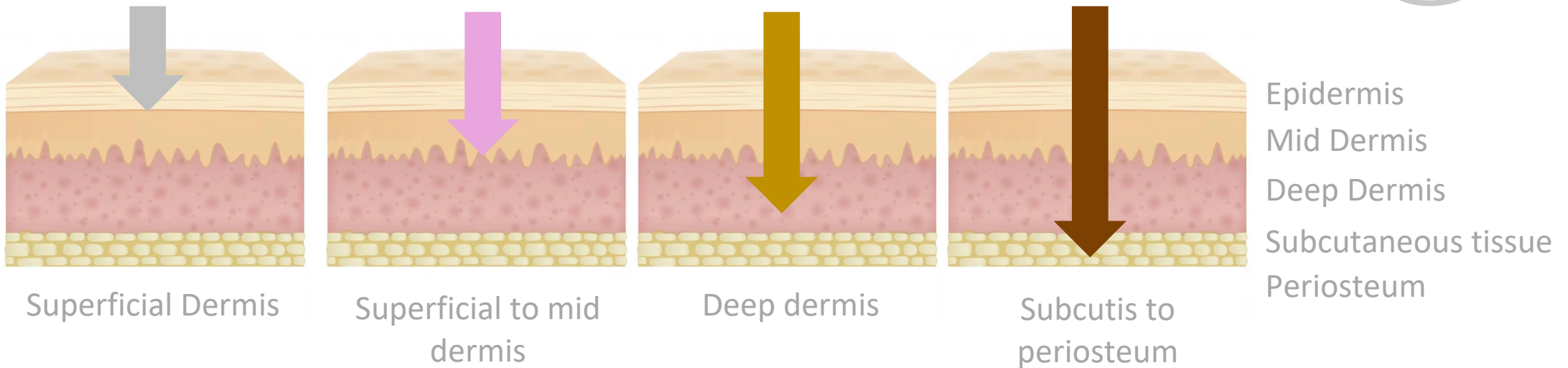
DEFINE

ENRICH

ULTRA

REF	MPF10S	MPF10M	MPF10H	MPF10U
Concentration	24 mg/mL			
Particle size	200 um	400 um	600 um	900 um
Needle size	30G TW x2	27G TW x2	25G TW, 27G TW	25G TW, 27G TW

GENIUS+



Our Range:

SMOOTH

- Fine lines & wrinkles
- Tear troughs
- Russian lips
- Necklace lines
- Hyaluron pen
- Mesotherapy

DEFINE

- Perioral lines
- Natural lips
- Moderate wrinkles
- Frown lines

ENRICH

- Firm lips
- Lip volume
- Nasolabial folds
- Marionette lines
- Deep wrinkles
- Chin

ULTRA

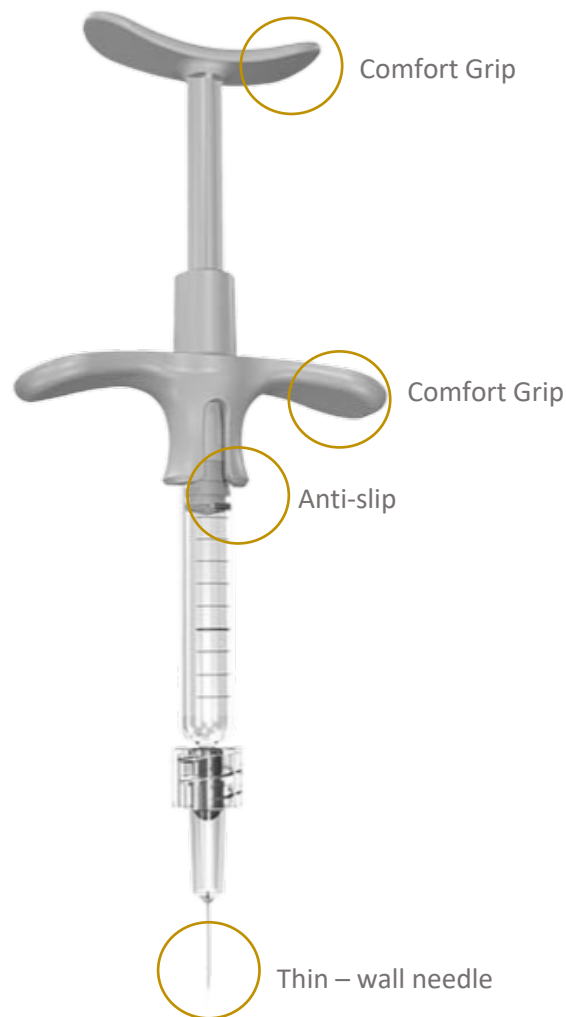
- Nose
- Cheek
- Jawline



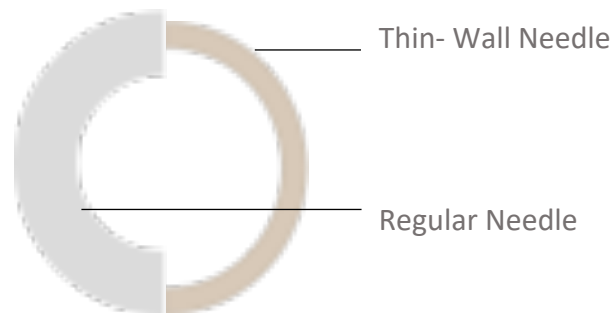
Ergonomic Design

Easy Operation

Ergonomically designed grip and push rod provides accurate and safe treatment with constant injection forces. Allows the user to perform various injection techniques according to treatment site



Needle



Grip



G E N I U S®

- 30G TW needle for Smooth type
- 27G TW Needle for Define, Enrich & Ultra type
(25G TW needle for Enrich and Ultra type: depends on user)

Hy-BRID Technology

Better Volume Effect and Retention

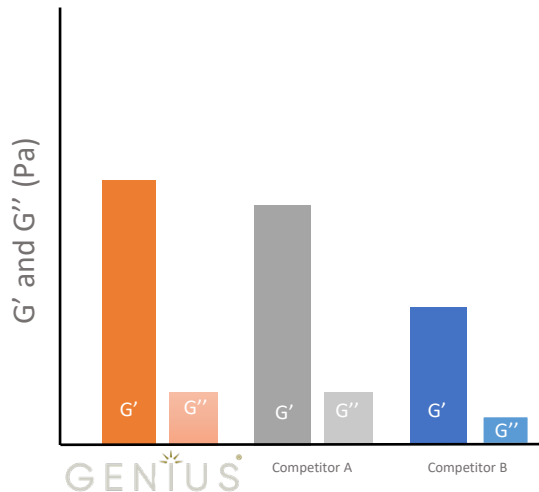
The Hy-BRID Technology makes the hyaluronic acid highly dense with uniform sized particles
This enables GENIUS to have optimal viscoelasticity and long-lasting volume

Safety

Safe to Use on Patients

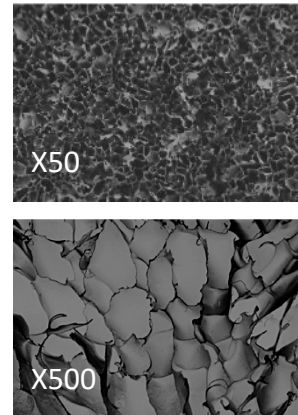
The manufacturing process is tightly controlled to bring the endotoxin and BDDE (chemical crosslinker) levels below the detection limit. The risk of adverse side effects (allergic reaction, oedema, etc.) are minimized.

Viscoelasticity



G': Storage modules / G'': Loss Modules

Lattice Structure
(SEM, Scanning Electron Microscope)



Performance Test



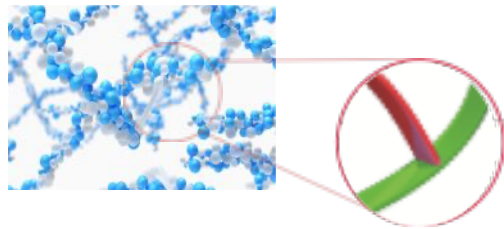
	Standard	Results
Appearance	No impurities, transparent and colourless gel	Pass
HA Concentration	21.6 ~ 26.4 mg	24.1 mg
pH	6.5 ~ 7.5	7.10
Residual BDDE	< 2 ppm	Not Detected
Endotoxin	< 20 EU	< 0.100 EU
Volume	< 1.0 ml	Pass

*What is BDDE (1,4-butanediol diglycidyl ether, cross-linking agent)?

BDDE (1,4-butanediol ether) is a chemical cross-linking agent to make hyaluronic acid into gel form. The residual amount of BDDE is strictly regulated to less than 2 ppm. It was not detected in every GENIUS Filler.

*Hy-BRID Technology

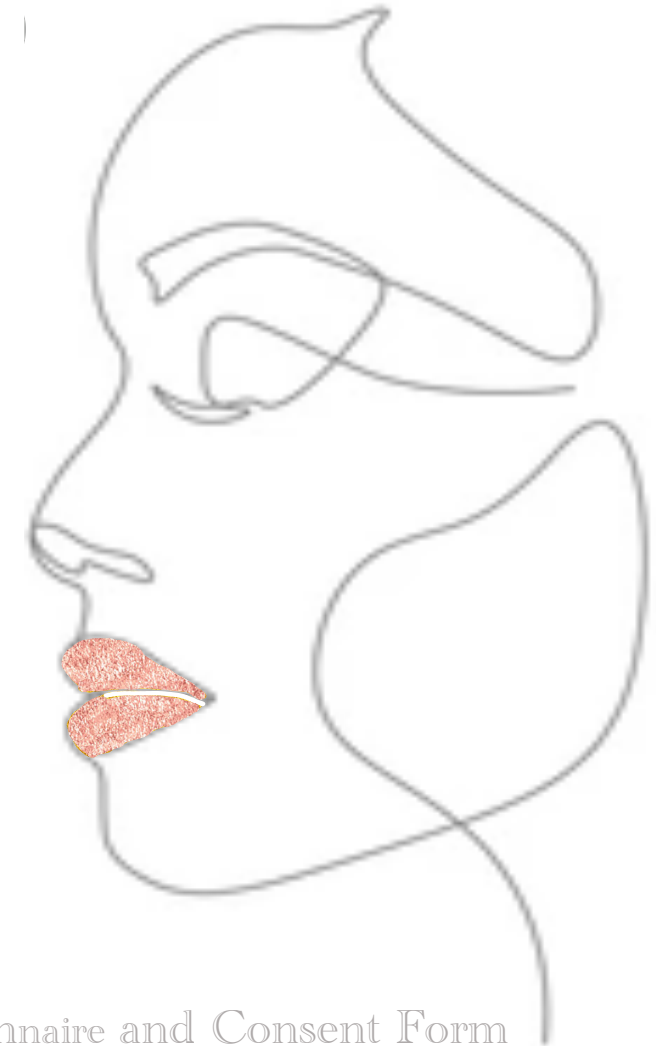
Hyper Cross-linked
Based on non-animal HA
Residue-free
Improved Density and elasticity



Downloadable Assets

- FREE Post-Treatment Lip Mask with Every Syringe
- FREE Marketing Images
- FREE Support from a Team of Experts
- FREE Medical Questionnaire and Consent Form
- FREE Professional Commercial
- FREE Pop-Up Banner

GENIUS⁺
Hyaluronic Acid Dermal Filler



GENIUS⁺
POST TREATMENT

Expect: Some redness
Swelling
Tenderness
(Occasionally bruising)

Action: These are short term and will subside within a few days. Although it can take up to 2 weeks for dermal filler to completely settle down.

GENIUS⁺
POST TREATMENT

DO NOT rub or massage the area.

DO NOT use makeup for 12 hours following treatment.

DO NOT use sun beds / saunas / steam rooms and avoid extreme temperatures.

If you have any concerns, contact your practitioner immediately.

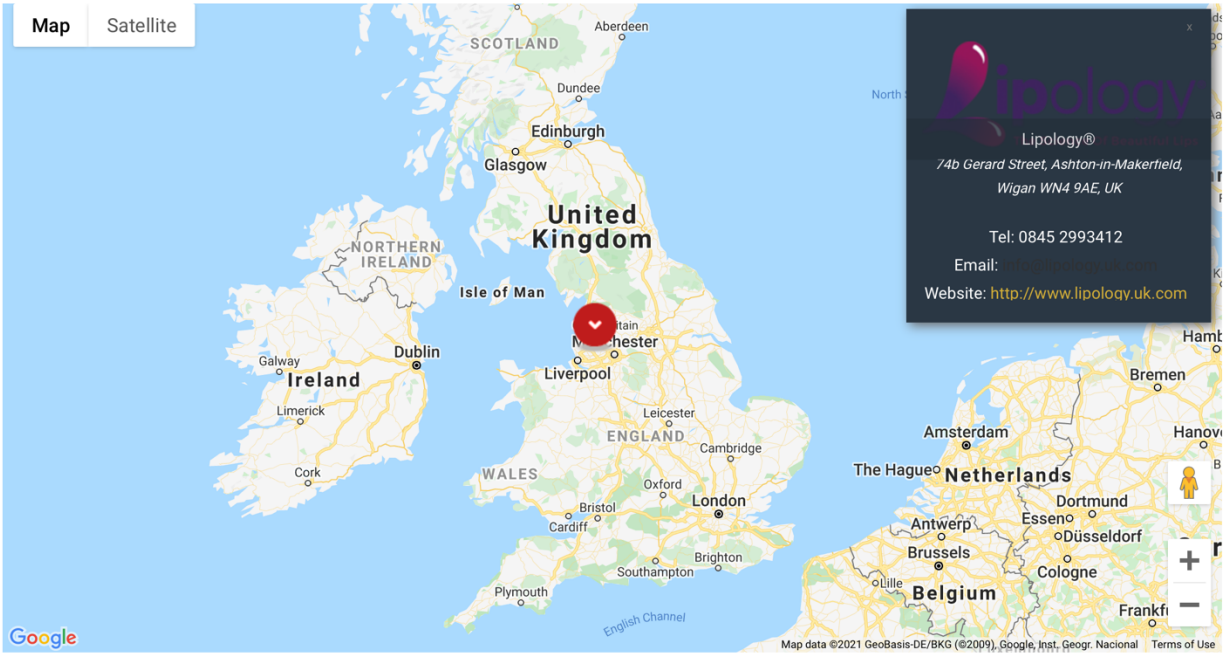
If you experience any questions or concerns, it's important that you contact your practitioner immediately.

Medical Questionnaire and Consent Form

Become a Distributor Now ...

Find a Distributor

Genius partners with authorised distributors around the world to provide you with local sales and service support, application expertise and availability of inventory, including products and accessories.



You will have a direct link to your shop through www.geniusfiller.com to help bring customers directly to your website.

Customers can search any area and find local and reputable distributors like yourself.

GENIUS⁺

sales@geniusltd.co

www.geniusfiller.com



@geniusfiller



@geniusfiller



@geniusfiller